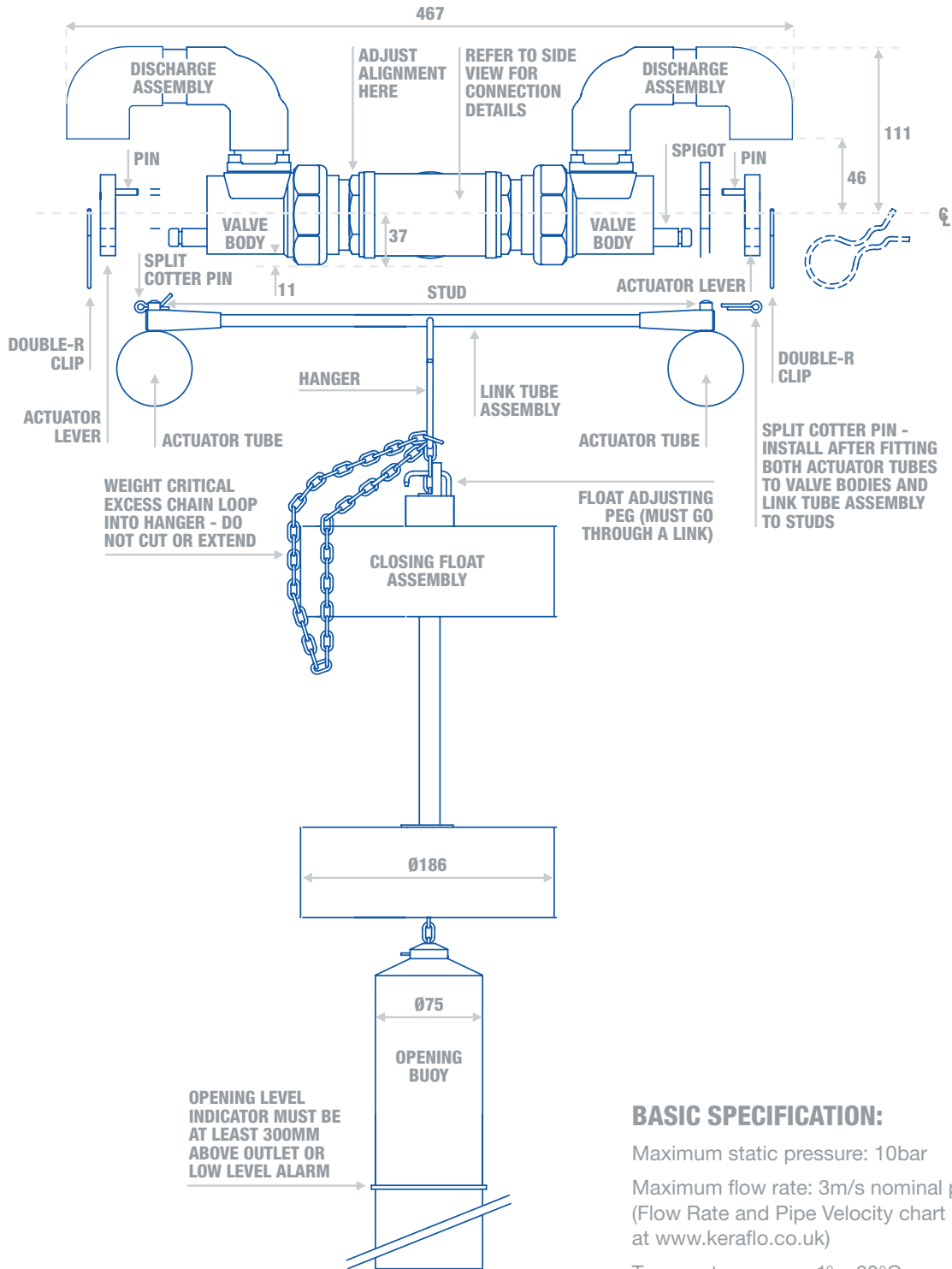


PRODUCT	AYLESBURY KB TYPE
DRAWING REF	KB 50-80 A-01
DRAWING VIEW	DIMENSIONS – FRONT VIEW



SIZES (DN):

2”(50)HF 2½”(65)SF 3”(80)RB



BASIC SPECIFICATION:

- Maximum static pressure: 10bar
- Maximum flow rate: 3m/s nominal pipe velocity (Flow Rate and Pipe Velocity chart is available at www.keraflo.co.uk)
- Temperature range: 1° – 60°C
- Parallel male BSP (G) connection.

PRODUCT	AYLESBURY KB TYPE
DRAWING REF	KB 50-80 A-01
DRAWING VIEW	DIMENSIONS – SIDE VIEW



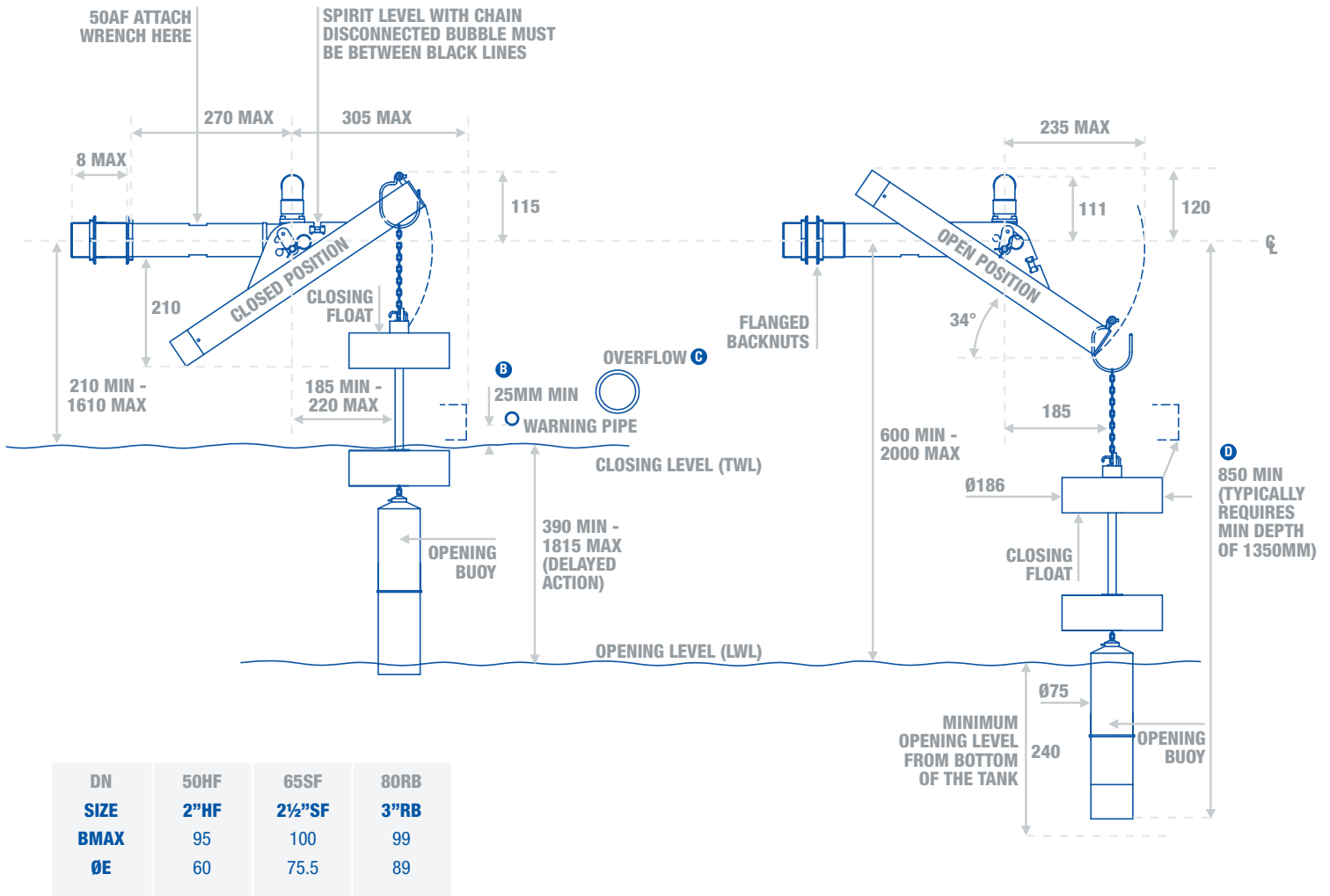
SIZES (DN):

2”(50)HF

2½”(65)HF

3”(80)RB

WARNING!
 THE WARNING PIPE AND OVERFLOW OUTLET SHOULD BE AVAILABLE ABOVE THE HIGHEST WATER LEVEL ACHIEVED BEFORE THE VALVE CLOSES.



DN	50HF	65SF	80RB
SIZE	2”HF	2½”SF	3”RB
BMAX	95	100	99
ØE	60	75.5	89

NOTES:

- Ⓑ SCHD2, SECT 7, G16.5 Water Regs. Gaps should be more if water is turbulent – especially if near valve discharge.
- Ⓒ Typically twice inlet bore. SCHD 2, SECT 7, G16.10 Water Regs. Warning/overflow pipes should be capable of taking any possible flow in the pipe arising from inlet valve failure.
- Ⓓ When opening level – 575mm